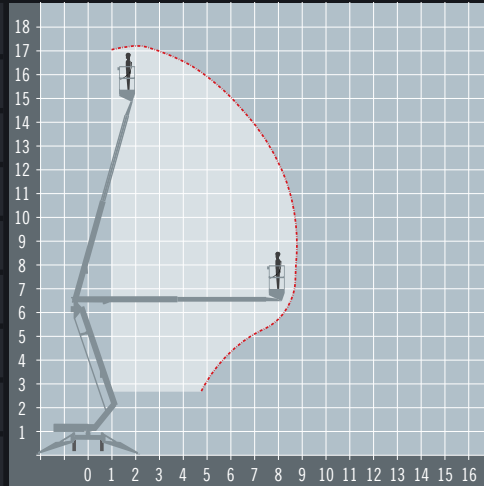


NIFTYLIFT NL170

Trailer mounted boom

REACH HEIGHT	17.1 m
PLATFORM HEIGHT	15.1 m
UP AND OVER	6.3 m
HORIZONTAL REACH	8.7 m
STOWED HEIGHT	2.15 m
DEPLOYED WIDTH	4.4 m
PLATFORM SIZE	1.1 x 0.65 m
WEIGHT	2,190 kg
LIFT CAPACITY	200 kg



Stowed travel size is 6.68 x 2.27 m (21' 11" x 7' 5")

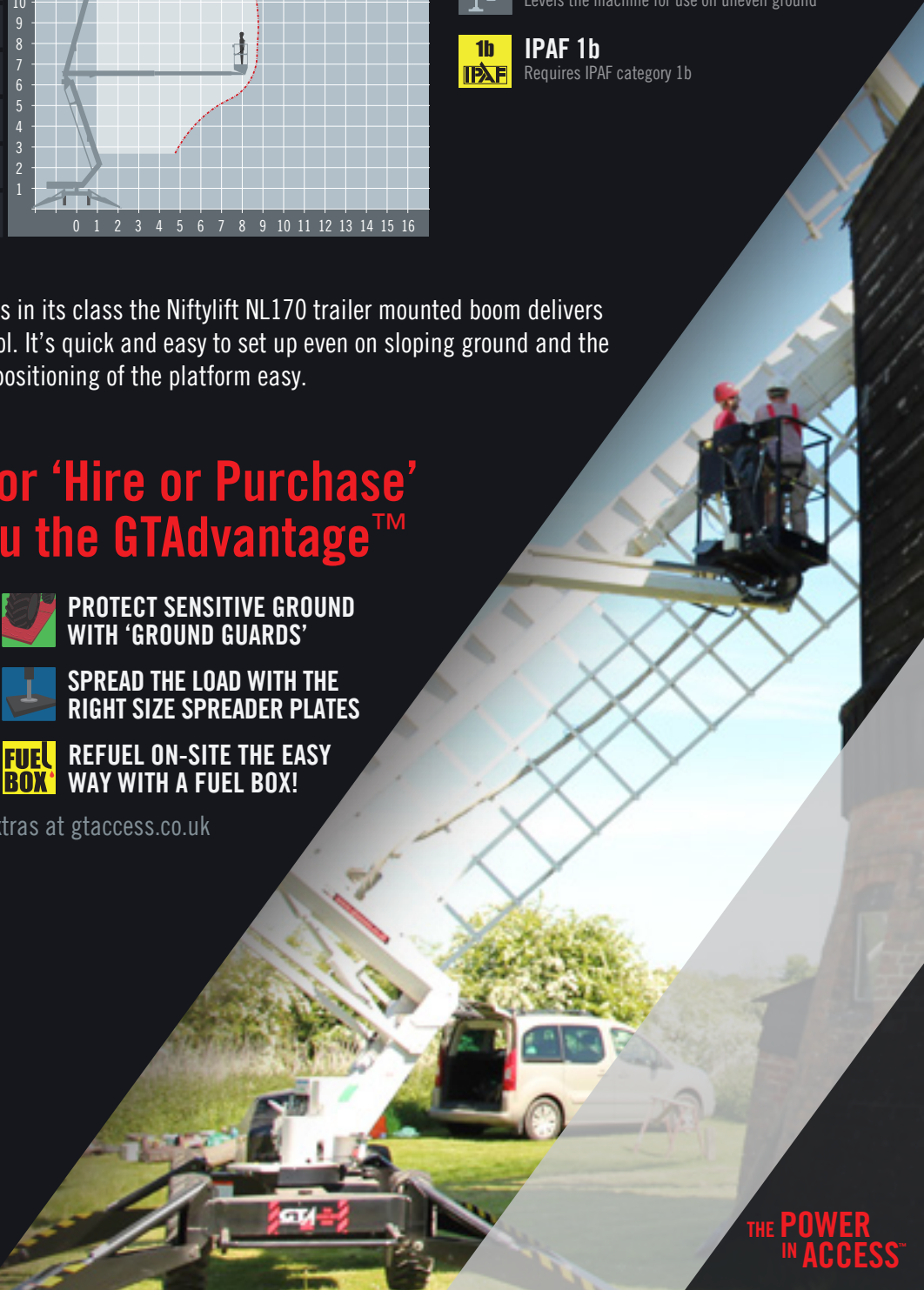
- HYBRID POWERED**
Diesel and Battery power for flexibility
- OUTDOOR RATED**
Wind rated for outdoor use
- LEVELLING STABILISERS**
Levels the machine for use on uneven ground
- IPAF 1b**
Requires IPAF category 1b

With one of the largest working envelopes in its class the Niftylift NL170 trailer mounted boom delivers maximum reach with stability and control. It's quick and easy to set up even on sloping ground and the telescopic upper boom makes accurate positioning of the platform easy.

A range of extra's for 'Hire or Purchase' designed to give you the GTAdvantage™

- STOP NUISANCE BORROWING WITH GTA SECURE™**
- PROTECT SENSITIVE GROUND WITH 'GROUND GUARDS'**
- DOUBLE POINT HARNESSSES TO KEEP YOU SAFE AT HEIGHT**
- SPREAD THE LOAD WITH THE RIGHT SIZE SPREADER PLATES**
- STAY FULLY CHARGED WITH TRANSFORMERS AND LEADS**
- FUEL BOX REFUEL ON-SITE THE EASY WAY WITH A FUEL BOX!**

Find out more about the 'GTAdvantage' extras at gtaccess.co.uk



THE POWER IN ACCESS™